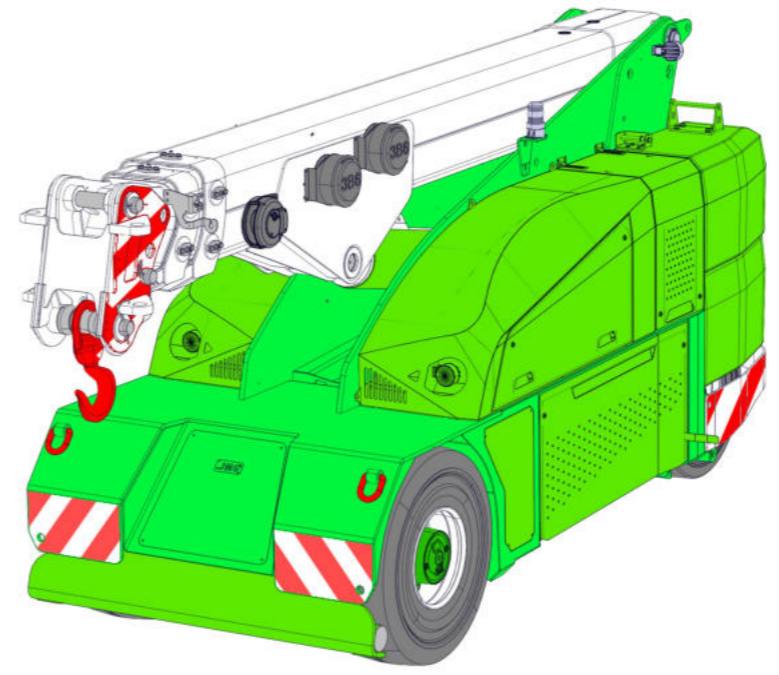


Data subject to change without prior notice
Edition 12/2019 © 2019 JMG Cranes S.p.A. All rights reserved



Electric Pick & Carry Cranes

JMG Cranes S.p.A.
Via Sito Nuovo 14
29010 Sarmato (PC) - Italy
t +39 0523 8486
e info@jmgcranes.com



MC 100S (metric)
Max Capacity 10,000 Kg

www.jmgcranes.com



MC 100S

RADIO-REMOTE CONTROL ON DRIVING, STEERING, BOOM MOVEMENTS, WINCH AND ACCESSORIES

FRONT-WHEELS DRIVE WITH COUNTER ROTATION

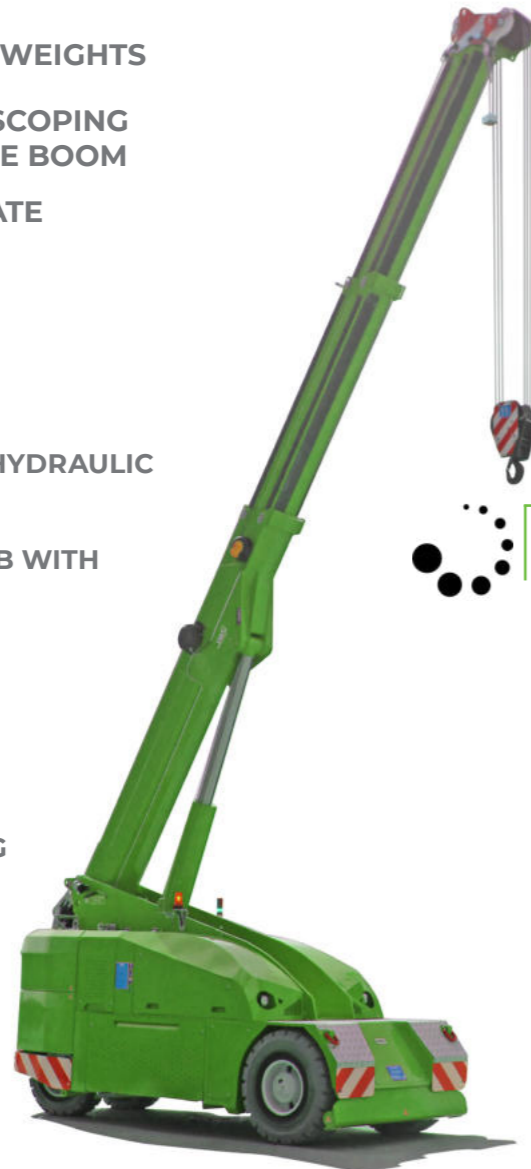
REMOVABLE COUNTERWEIGHTS

HYDRAULICALLY TELESCOPING PROPORTIONALLY TYPE BOOM

FRONT STABILISER PLATE

Options :

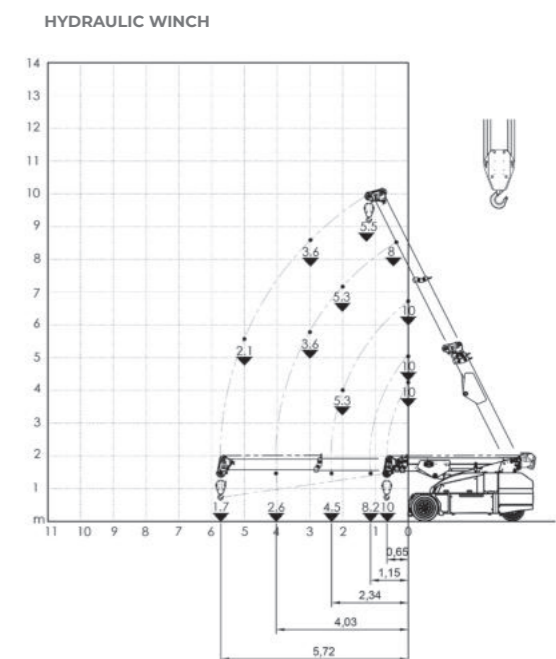
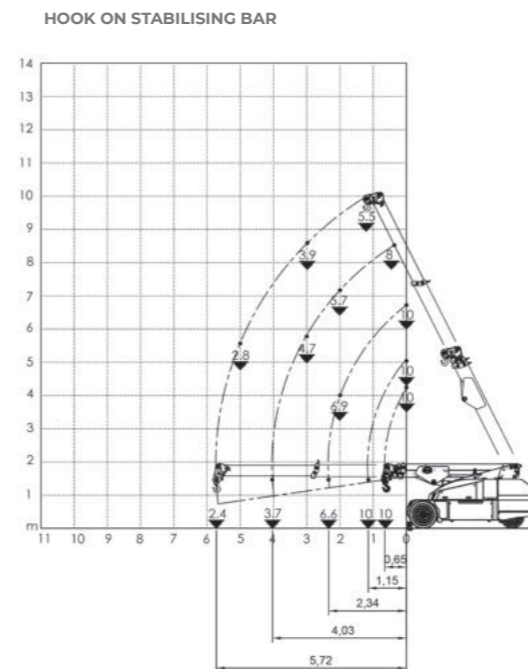
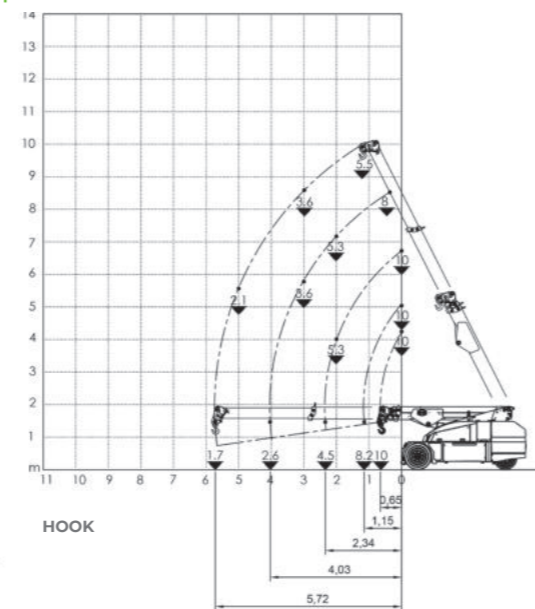
- HYDRAULIC WINCH
- HYDRAULIC JIB WITH HYDRAULIC EXTENSION
- BENDABLE MANUAL JIB WITH MANUAL EXTENSION
- NON-MARKING TIRES
- HYDRAULIC FORKS
- MAN BUCKET
- ATEX CONVERSION
- CUSTOMIZED PAINTING



Technical features

Max Capacity kg	10,000	Front-wheels drive. 2 electric motors AC 7,5 kW 80V Insulation class H	LMI Electronic safe load indicator and tilting moment limiter
	Dimensions mm	3800x1490x1949	Automatic braking system on all wheels
		80 V - 810 Ah 8 working hours	Fabricated from preformed and welded quality steel plate
	Front nr. 2 superelastic 355-15" Rear nr. 2 superelastic 250-15"	+65°/-10°	Motor driven pump 16 kW - 80 V AC, Insulation class H
	Rear Steering angle -90°/+90°		

Load charts



EU Standards CE

	UNI ISO 4030-1: A3
	2006/42 CE MD-2014/30 CE EMC - 2014/35 CE LVD - 2000/14 e and subsequent modifications
	EN 13000:2014 UNI ISO 4301-2:2011 and subsequent modifications

Dimensions

